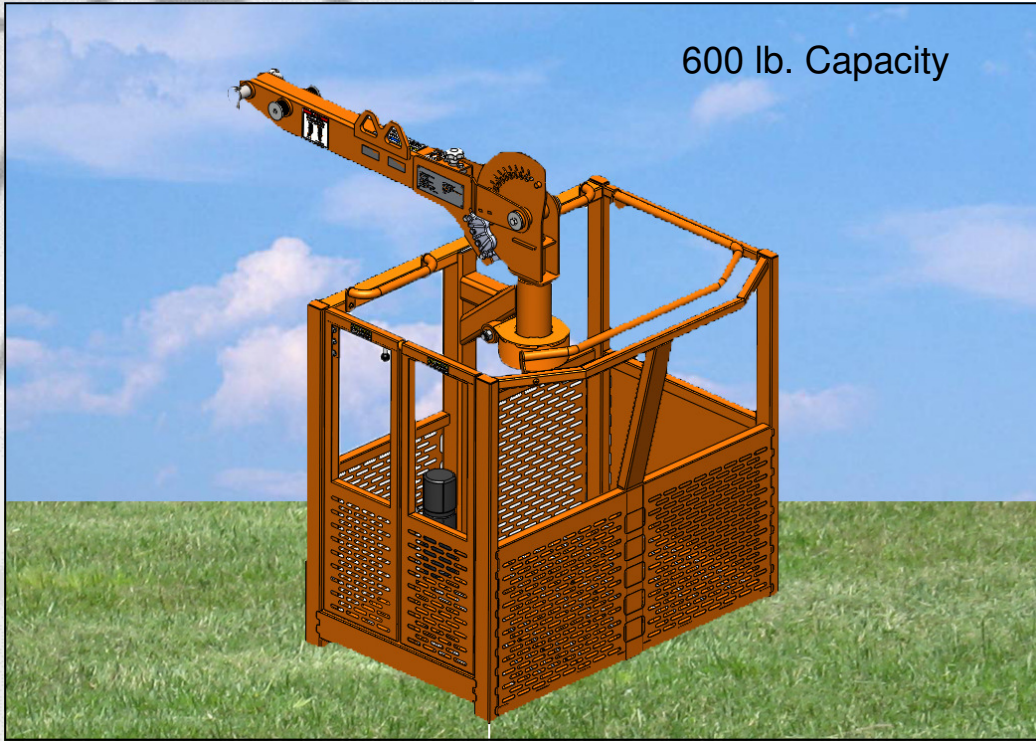


R-3048



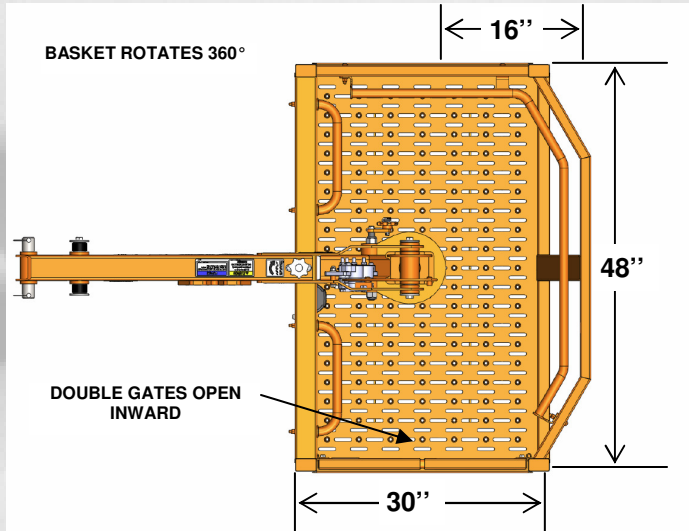
DIVERSIFIED

P R O D U C T S

(254) 757-1177

www.diversifiedproduct.com

The next generation basket designed by engineers after many years of input from operators and field crews



- Full-sized floor provides more space for men and materials – 10 square feet

Features and Benefits:

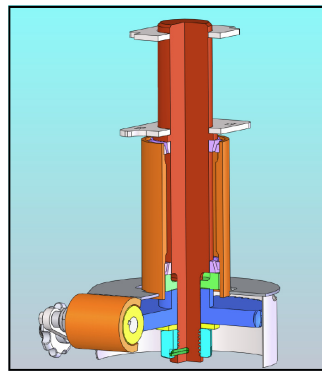
- Steel construction to meet the rigors of contractors and utility applications
- Floor (30''x 48'')
 - slots in floor to drain water
 - upset holes for skid resistance
- Hand rail inside top rail and enclosed to midrail to comply with OSHA 29CFR Part 1926
- Meets or exceeds industry standards

DIVERSIFIED
P R O D U C T S

1001 Webster Avenue
Waco, Texas 76706
254-757-1177 phone
noahg@diversifiedproduct.com
www.diversifiedproduct.com
© 2011 Diversified Products

Photos and diagrams are for promotional purposes only.

Product design and specifications may change without notice or obligation.



ROTATOR

- High capacity hub & spindle
- Plus/Minus 45° Rotation at high boom angles
- 360° at mid/low boom angles
- EXTREMELY SERVICEABLE

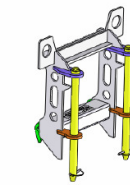
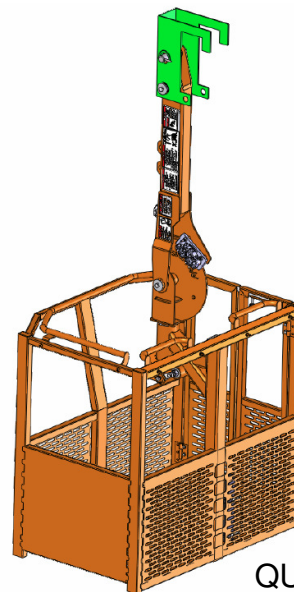
BRAKE

- Medium duty brake
- Heavy duty linkage
- Large disc brake

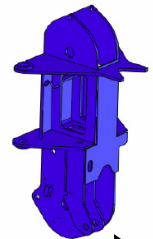


ENTRANCE

- Heavy duty hinges with stainless steel pins provide long life
- Basket entrance has reinforcement for rugged applications
- Gate clearance to the floor provides added storage space



Quick Attach



Boom Tip

QUICK ATTACH MOUNTING

- Ease of installation on a crane tip
- Basket universal mounting permits installation on multiple cranes

Test weights available to comply with OSHA 29CFR Part 1926.

Contact Diversified for all your man basket needs. Yoke style 4', 6', single man, rotating and special requirements.

Diversified Products provides customer-focused solutions to make you more efficient, productive and safe. We manufacture innovative products driven by input straight from the field.

PRODUCT CONCEPT

PRODUCT ENGINEERING

PRODUCT FABRICATION