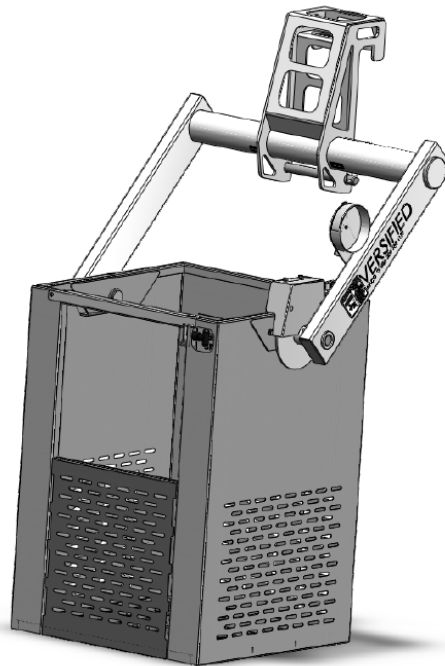


OPERATION, MAINTENANCE AND PARTS MANUAL

DIVERSIFIED

• P R O D U C T •

DEVELOPMENT



GEN II SINGLE MAN BASKET



Read and understand all of the instructions and safety information in this manual before operating or servicing this piece of equipment.

Introduction

This manual has been compiled to assist you in properly operating and maintaining your Diversified Gen II Single Man Basket.

Before placing the basket in service, all operators and persons working around the equipment must thoroughly read and understand the contents of the manual pertaining to **Safety, Operation and Maintenance**. Before moving the basket, information relating to transporting the basket must be read and observed.

The manual must be retained with the basket for use by subsequent operating personnel.

Information in this manual does not replace federal, state or local regulations, safety codes or insurance requirements.

Table of Contents

Description 2

Safety 2

Purpose of this Manual 2

Other Publications..... 2

Important Safety Information.....3-6

Specifications..... 7

Transport..... 7

Operation 7

Brake Adjustment Procedure 8

Maintenance 8

Replacement Parts 9-10

Quick Change Assembly.....11-13

Description

The Diversified Gen II Single Man Basket is a personnel lifting system that can be used on boom trucks or knuckle boom cranes. It is to be used in accordance with the instructional and warning decals that are fixed to the platform and are published in this manual and in accordance with the other publications listed in this manual.

Safety

Safety is essential in the use and maintenance of this Diversified equipment. This manual and any markings on this piece of equipment provide information for avoiding hazards and unsafe practices related to the use of this equipment. Observe all of the safety information provided.

Purpose of this Manual

This manual is intended to familiarize all personnel with the safe operation and maintenance procedures for the following Diversified piece of equipment:

Gen II Single Man Basket

Keep this manual available.

Replacement manuals are available for download.

Other Publications

ASME B30.5

ASME B30.23

All specifications are nominal and may change as design improvements occur. Diversified Product Development shall not be liable for damages resulting from misapplication or misuse of its products.

KEEP THIS MANUAL

IMPORTANT SAFETY INFORMATION



SAFETY ALERT SYMBOL

This symbol is used to call your attention to hazards or unsafe practices which could result in an injury or property damage. The signal word, defined below, indicates the severity of the hazard. The message after the signal word provides information for preventing or avoiding the hazard.

▲ DANGER

Immediate hazards which, if not avoided, WILL result in severe injury or death.

▲ WARNING

Hazards which, if not avoided, COULD result in severe injury or death.

▲ CAUTION

Hazards or unsafe practices which, if not avoided, MAY result in injury or property damage.

NOTICE

Indicates a statement of company policy directly or indirectly related to the safety of personnel or protection of property.

▲ DANGER

YOU MUST NOT
OPERATE THIS CRANE UNLESS:

1. YOU HAVE BEEN TRAINED IN THE SAFE OPERATION OF THIS CRANE
2. YOU KNOW AND FOLLOW THE SAFETY AND OPERATING RECOMMENDATIONS CONTAINED IN THE CRANE MANUFACTURERS MANUAL, PLATFORM OPERATORS MANUAL, YOUR EMPLOYERS WORK RULES, AND APPLICABLE GOVERNMENT REGULATIONS.

AN UNTRAINED OPERATOR SUBJECTS HIMSELF AND OTHERS TO DEATH OR SERIOUS INJURY

PER ANSI Z535.4-1998 33416

▲ DANGER

FAILURE TO OBEY THE
FOLLOWING WILL RESULT IN
DEATH OR SERIOUS INJURY

- PRIOR TO OPERATION, TRUCK MUST BE SECURELY PARKED, DRIVELINE DISENGAGED AND PLATFORM ASSEMBLY PROPERLY INSTALLED
- TO AVOID TIP-OVER, OUTRIGGERS MUST BE PROPERLY EXTENDED TO A SOLID LEVEL SURFACE
- OPERATE ALL CONTROLS SLOWLY FOR A SMOOTH PLATFORM MOTION. MAKE SURE CONTROLS ARE RETURNED TO NEUTRAL AFTER DESIRED OPERATION
- CREW MUST USE PROPER PERSONAL AND OTHER PROTECTIVE EQUIPMENT
- NEVER LOAD BEYOND RATED CAPACITY
- NEVER OPERATE CRANE DEVICE WITH PERSONNEL UNDER JIB OR PLATFORM
- NEVER MOVE THE TRUCK UNTIL THE PLATFORM ASSEMBLY AND OUTRIGGER ARE PROPERLY STOWED AND SECURED
- REFER TO THE CRANE MANUAL AND PLATFORM OPERATION MANUAL FOR COMPLETE INSTRUCTIONS

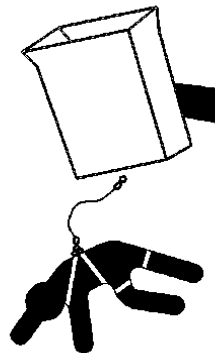
PER ANSI Z535.4-1998 61004

▲ DANGER

FALLING FROM BASKET
WILL RESULT IN
DEATH OR SERIOUS
INJURY

BASKET PERSONNEL MUST
WEAR A SAFETY HARNESS WITH A
LANYARD ATTACHED TO ANCHOR
POINT PROVIDED.

BASKET DOORS MUST BE
SECURELY LATCHED.



PER ANSI Z535.4-1998 33407

IMPORTANT SAFETY INFORMATION

⚠

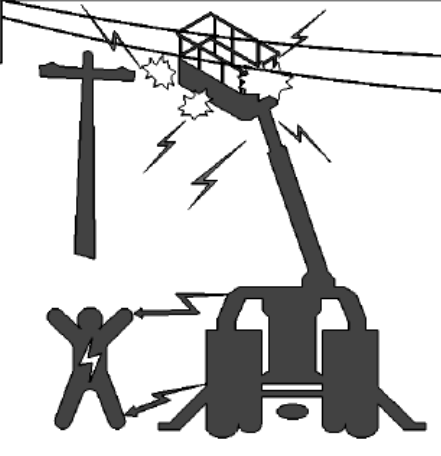
DANGER

ELECTROCUTION HAZARD
THIS MACHINE IS NOT INSULATED

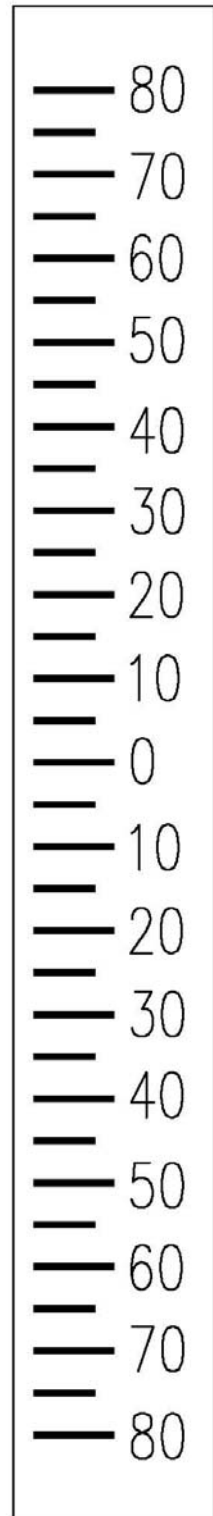
DEATH OR SERIOUS INJURY WILL RESULT FROM CONTACT WITH OR INADEQUATE CLEARANCE FROM ELECTRICAL POWER LINES AND APPARATUS.

MAINTAIN SAFE CLEARANCES FROM ELECTRICAL POWER LINES IN ACCORDANCE WITH APPLICABLE GOVERNMENT REGULATIONS. ALLOW FOR BOOM, BASKET, ELECTRICAL-LINE SWAY.

THIS MACHINE DOES NOT PROVIDE PROTECTION FROM CONTACT WITH OR PROXIMITY TO AN ELECTRICALLY CHARGED POWER LINE.

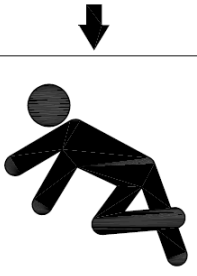


PER ANSI Z535.4-1998 33422



⚠

DANGER



RELEASING THE BRAKE WILL RESULT IN DEATH OR SERIOUS INJURY

- DO NOT LEAVE BASKET WITH HANGAR POSITIONED OR ELEVATED ABOVE BASKET WHEN BASKET IS NOT ATTACHED TO BOOM OR JIB
- DO NOT RELEASE BRAKE LEVER WITHOUT FIRMLY SUPPORTING HANGER

PER ANSI Z535.4-1998 33408

⚠

CAUTION

BASKET CAPACITY
1 PERSON 350 POUNDS
INCLUDING TOOLS AND EQUIPMENT

PER ANSI Z535.4-1998 62049

NOTICE

REFER TO OPERATING INSTRUCTIONS DETAILED IN DECALS, BASKET OPERATORS MANUAL AND CRANE OPERATORS MANUAL

PER ANSI Z535.4-1998 33423

⚠

DANGER

THE COMBINED WEIGHT OF THE BASKET AND ATTACHMENT DEVICE, PERSONNEL, TOOLS AND OTHER EQUIPMENT MUST NOT EXCEED 50% OF THE APPLICABLE LIFTING CAPACITY CHART FOR THE CRANE.

PER ANSI Z535.4-1998 33415

ONE PERSON ANCHOR POINT

PER ANSI Z535.4-1998 33409

LOAD CHART REQUIRED

⚠

WARNING

LOAD LINE MUST BE STOWED AND WINCH FUNCTION DISABLED FOR BASKET OPERATIONS

PER ANSI Z535.4-1998 33414

IMPORTANT SAFETY INFORMATION

OPERATING INSTRUCTIONS

QUICK ATTACH/DISC BRAKE

OPERATION:

Before using the controls, the operator must be familiar with the warnings and safety instructions of the Basket, Crane and the work practices of the Company.

Personnel in the basket must strictly adhere to the instructions, warnings, cautions and dangers described in the decals located on the crane and basket assembly.

The crane and basket assembly are **NON-INSULATED**. Minimum approach distances to electrical lines and electrically charged devices must be maintained.

Fall protection devices must be worn by each occupant in the basket. Each fall protection lanyard must be individually attached to a designated anchor point. Attach only one lanyard per anchor point.

Additional safety equipment such as hard hat, eye protection and foot protection shall be worn in accordance to company and job site regulations.

All boom movements must be performed slowly and deliberately. Abrupt control operation will result in erratic movements.

The combined weight (including the basket assembly, personnel, tools and other equipment) must not exceed 50% of the lifting capacity chart for the crane.

When bringing the basket back to the ground, use light down pressure only.

Overpowering the basket into the ground may result in irreparable structural damage to the basket assembly and/or the crane.

BASKET BRAKE:

The Disc brake is used to lock the basket position.

For complete brake adjustments consult the manual.

Rotate end of handle to adjust brake.

Avoid contacting objects with the side of the basket causing excessive force to be applied to the basket assembly. Structural damage to the basket and/or boom may result.

BASKET MOUNTING:

Prior to mounting the basket to the crane, the crane must be setup and leveled in accordance to the crane manufacturer's instructions and specifications.

Place basket assembly on level ground at an appropriate distance from the crane.

Position the crane tip under the basket assembly mounting points.

Raise or lower the basket arm so the angle of the mount points

matches the angle of the tip. Use the basket brake to maintain this angle.

Slowly lift the crane boom to engage the tip onto the basket assembly top mounting points.

CAUTION: Pinch Zone! Keep hands, fingers and body parts clear of the mounting attachment points. Serious bodily injury will result.

Once the basket mounting points are fully engaged into the tip mounting ears, install the keeper pins through the holes in the lower mounting pins.

INSPECTION:

Prior to operating this unit, the operator must check the following:

Complete visual inspection of the basket assembly, mounting pins, pivot pins and brake assembly.

Visually inspect all welds on the basket assembly to be free of cracks or separations.

Visually inspect that the mounting pin keepers are in place and secure.

Before any boom function operation, insure that the pre-operational checklist for the crane has been completed.

The lifting capacity of the basket or crane are not being exceeded.

The Load-Moment Indicator system is properly calibrated for the addition and capacity of the basket assembly.

Check the entire operating environment (including overhead) for hazards or obstructions prior to operating crane.

FOR WISE 250 J.1961 P.144

IMPORTANT SAFETY INFORMATION

OPERATING INSTRUCTIONS QUICK ATTACH/DISC BRAKE/KNUCKLE BOOM

PLATFORM MOUNTING:

Prior to mounting the platform to the crane, the crane must be setup and leveled in accordance to the crane manufacturer's instructions and specifications. Insert knuckle boom adapter into end of knuckle boom and secure with locking pin. Position the crane tip with the adapter under the platform assembly mounting points. Raise or lower the platform arm so the angle of the mount points matches the angle of the tip. Use the platform brake to maintain this angle. Slowly lift the crane boom to engage the adapter onto the platform assembly mounting points.

CAUTION: Pinch Zone! Keep hands, fingers and body parts clear of the mounting attachment points. Serious bodily injury will result.

Once the platform mounting points are fully engaged onto the adapter, install the keeper pin through the hole in the lower mounting pin.

INSPECTION:

Prior to operating this unit, the operator must check the following:

Complete visual inspection of the platform assembly, mounting pins, pivot pins and brake assembly.

Visually inspect all welds on the platform assembly to be free of cracks or separations.

Visually inspect that the mounting pin keepers are in place and secure.

Before any boom function operation, insure that the pre-operational checklist for the crane has been completed.

The lifting capacity of the platform or crane are not being exceeded.

The Load-Moment Indicator system is properly calibrated for the addition and capacity of the platform assembly.

Check the entire operating environment (including overhead) for hazards or obstructions prior to operating crane.

OPERATION:

Before using the controls, the operator must be familiar with the warnings and safety instructions of the Platform, Crane and the work practices of the Company.

Personnel in the platform must strictly adhere to the instructions, warnings, cautions and dangers described in the decals located on the crane and platform assembly.

The crane and platform assembly are **NON-INSULATED**. Minimum approach distances to electrical lines and electrically charged devices must be maintained.

Fall protection devices must be worn by occupant in the platform.

Fall protection lanyard must be attached to a designated anchor point.

Additional safety equipment such as hard hat, eye protection and foot protection shall be worn in accordance to company and job site regulations.

All boom movements must be performed slowly and deliberately. Abrupt control operation will result in erratic movements.

The combined weight (including the platform assembly, personnel, tools and other equipment) must not exceed 50% of the lifting capacity chart for the crane.

When bringing the platform back to the ground, use light down pressure only.

Overpowering the platform into the ground may result in irreparable structural damage to the platform assembly and/or the crane.

PLATFORM BRAKE:

The Disc brake is used to lock the platform position.

For complete brake adjustments consult the manual.

Avoid contacting objects with the side of the platform causing excessive force to be applied to the platform assembly. Structural damage to the platform and/or boom may result.

FIG. ANS 2531-6-199 6/108

Specifications

Gen II Single Man Basket

Model Number61830
 Basket Load Capacity350 lb (159.1 kg) (1 person)
 Basket Assembly Weight 255.68 lb (116.2 kg)
 Width
 Basket Assembly Width 44.23" (112.3 cm)
 Basket Width.....30" (76.2 cm)
 Depth
 Basket Assembly Depth.....42.91" (109 cm)
 Basket Depth30" (76.2 cm)
 Height
 Maximum Height Extended..... 77.28" (196.3 cm)
 Basket Height.....43.5" (110.5 cm)

Transport

When transporting the basket assembly, the brake should not be engaged. Properly secure the entire assembly to the transporting vehicle. Do not transport the basket while installed on the crane. Do not secure the basket at the mid-span of the rails. Rather, secure it at points close to the vertical members.

Operation

Pre-Operation

1. Inspect the basket assembly for any structural damage, cracked welds or missing parts.
2. Check that the brake works properly before operation.
3. Check that the basket assembly is properly attached to the adapter and that the cross pin is in place at the bottom of the adapter and that locking pins are in place.
4. Check that the quick change adapter is properly pinned to the boom tip and that locking pins are in place.

Operation

See operating instructions decal on pages 5 and 6.

Operation must comply with the "operations" section of ASME B30.23.

All specifications are nominal and may change as design improvements occur. Diversified shall not be liable for damages resulting from misapplication of misuse of its products.

Brake Adjustment Procedure

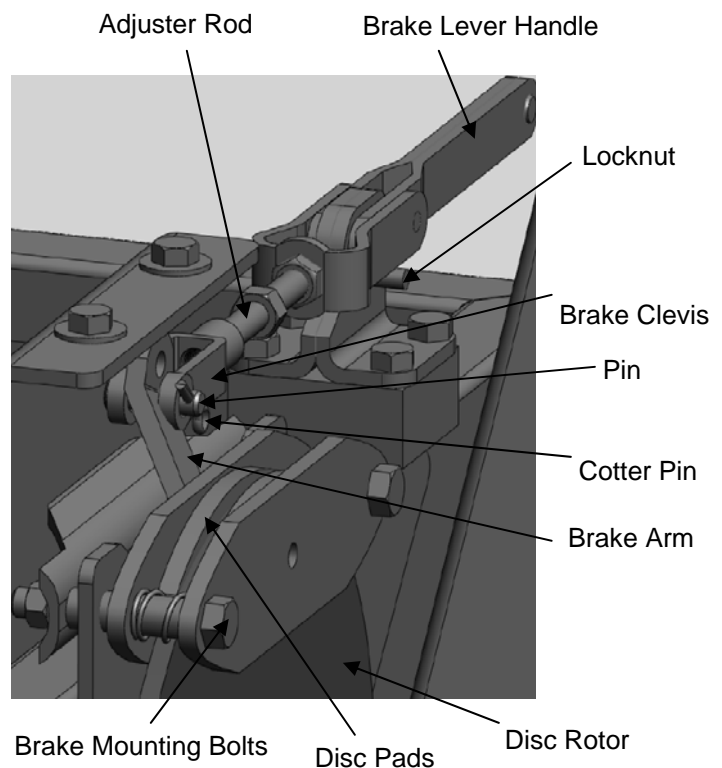
To originally set the Man Basket Disc Brake, the clamping force between the disc brake and the brake rotor (with the brake lever in the locked position), must be established. The disc brake must clamp the brake rotor when the brake lever is in its full locked position with enough clamping force to stop and hold the brake disc or the man basket completely from rotational movement. When the brake is released, it only needs to release enough to allow the brake disc to freewheel, or in other words, for the basket to settle into the level position. As the brake disc pads wear, the brake assembly will move across the mounting bolts, maintaining its alignment to the brake disc rotor.

To set this assembly, after the yoke weldment has been installed on the man basket, remove the disc brake mounting bolts from the disc brake and install the disc brake so the brake rotor fits between the disc brake pads, and the brake arm fits towards the man basket mounting plate. Next, install the mounting bolts through the disc brake holes and through the corresponding holes on the mounting plate on the man basket and through the corresponding holes on the disc brake mounting plate on the other side of the man basket mounting plate. Next, install the nuts on the bolts. Next, install the brake lever assembly onto the man basket as shown in the picture, complete with the locknuts and brake clevis. Do not tighten the locknuts or brake clevis at this time.

The next step is to rotate the disc brake arm to the front of the basket and position the brake clevis until the holes through both of them align, then install the clevis pin through all holes. Next, rotate the brake lever to the locked position which will clamp the disc brake pads onto the rotor disc. The brake pads should be clamped tight enough on the rotor disc to keep it from rotating. When the brake lever is released, the brake should open up enough clearance to allow the brake disc to rotate. If, when trying to set the brake lever, the brake lever stops before it reaches the stop position on the linkage, the brake is set too tight and needs to be loosened. The brake clevis will have to be rotated "outward" or towards the brake lever to loosen the clamping travel. If the brake lever rotates to the locked position but the disc brakes will not clamp the rotor (or will not clamp it enough to stop it), the brake is not set tight enough and needs to be tightened. The brake clevis will have to be rotated "in" or towards the disc brake until the brake will stop the rotor when in the brake lever locked position. The brake handle should be rotated through its full movement to check the stopping and releasing of the brake assembly. Once the two conditions have been achieved, set the locknut against the brake clevis and install the cotter pin into the clevis pin in the brake clevis. The brake cover must be securely installed over the disc brake before using the man basket.

Periodical adjustment will have to be made when the brake lever handle is moved to its full set position and the disc brake will not longer hold the brake rotor stopped. The brakes can be adjusted as in the above paragraph to tighten the clamping force of the brake assembly.

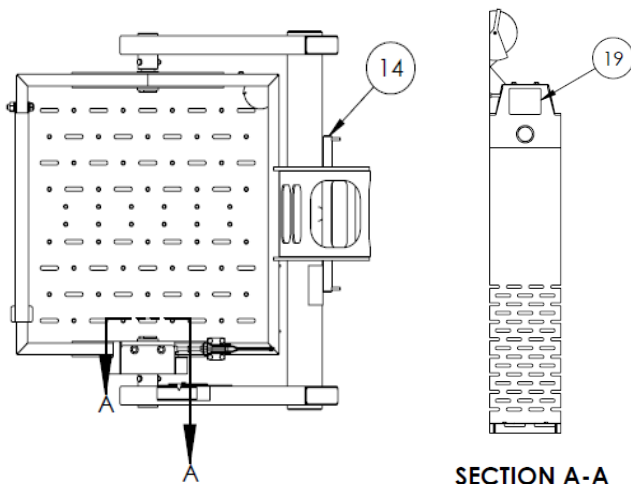
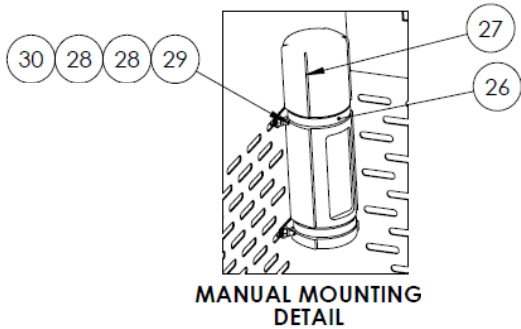
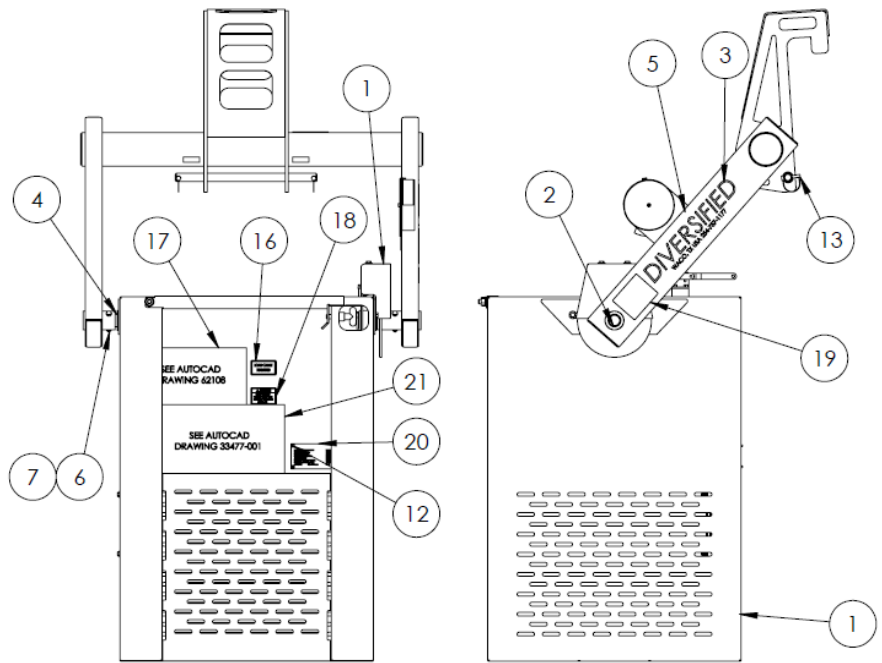
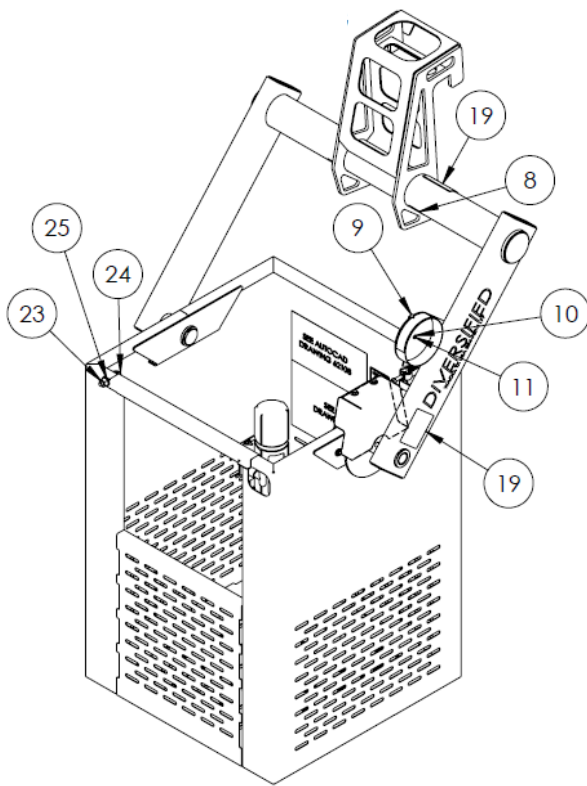
If the disc brakes will not stop the disc rotor when all adjustments are reached, the brake disc pads may be worn out and need to be replaced. To achieve this, reverse the above brake setting procedure and replace the brake disc pads. Next, adjust the brake clevis until the brake assembly stops the disc when fully applied.



Maintenance

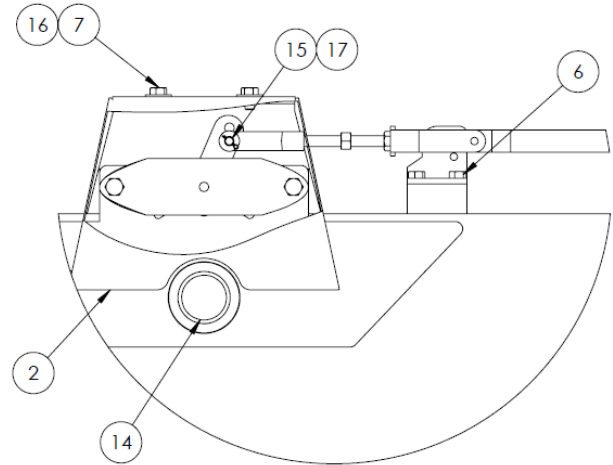
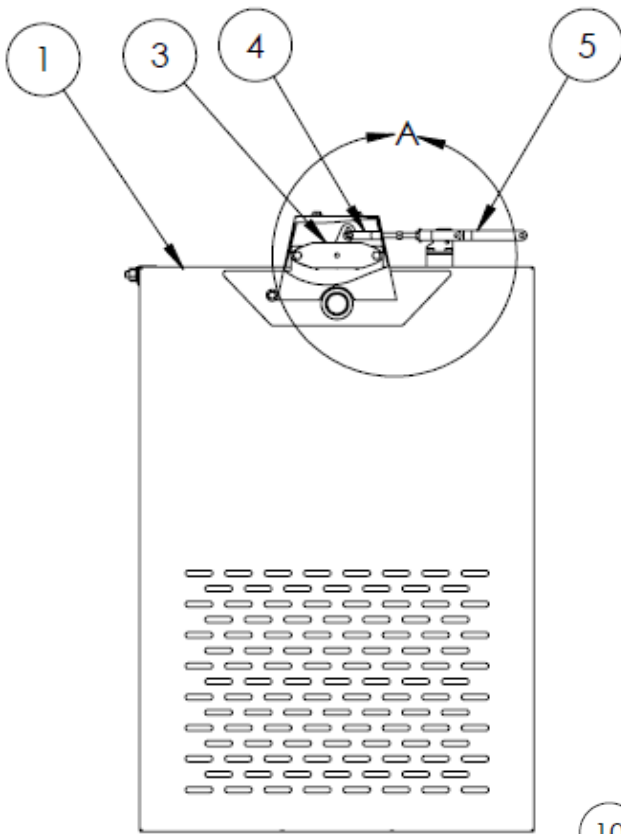
Periodical maintenance on the brake assembly is required. A visual check of the operation and parts of the brake system for broken parts or difficult movement of the brake lever assembly is needed. Lightly oiling the pivot points of the lever linkage will keep it operating properly. A light coat of grease on the threads will aid when rotating the locknut and the brake clevis for adjustment of the brakes. A visual check of the brake disc pads for pad wear is needed. Replace the brake cover securely after inspections or maintenance is complete.

Replacement Parts

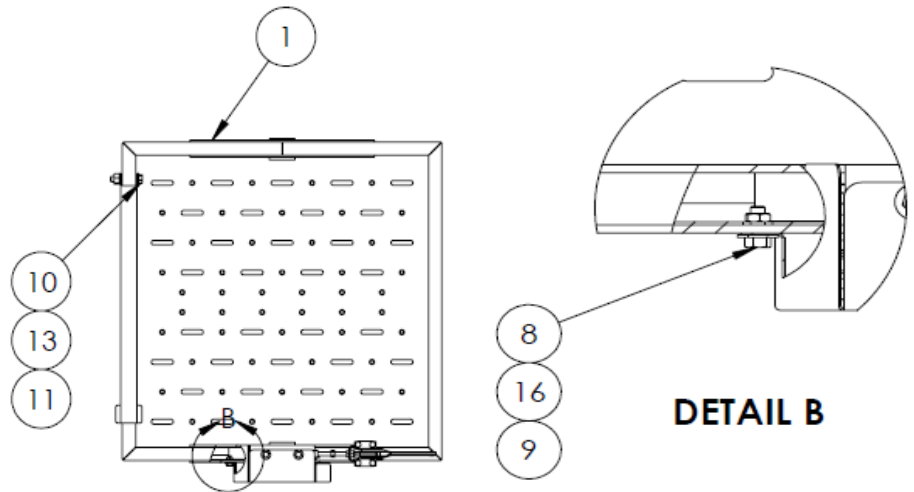


30		NUT, HEX LOCK, 1/4-20 UNC	2
29		HHCS, 1/4-20UNC, 1 LONG	2
28		WASHER, FLAT, 1/4 DIA, USS	4
27	62238	MANUAL PAK 9000-14	1
26	63235	CLAMP, CUSHIONED TUBE, 3.5" DIA	2
25		WASHER, FLAT, 1-2 DIA SAE	2
24		LOCK NUT, HEX 1/2-20 UNC	1
23		HHCS, 1-2-13 UNC, 2.5 LONG	1
22	33432	DECAL, ANGLE INDICATOR	1
21	33477-001	DECAL, SINGLE	1
20	62060	PLATE, SERIAL NUMBER	1
19	33408	DECAL, DANGER BRAKE	3
18	62049	DECAL, 350 LB CAPACITY	1
17	62108	OPERATING INSTRUCTIONS, KNUCKLE BOOM	1
16	61983	LOAD CHART DECAL	1
15	62930	INSTRUCTION MANUAL, GEN II SINGLE MAN BASKET	1
14	61252	PIN, BOOM ADAPTER MOUNT	1
13	62241	LINCH PIN 5/16" DIA X 1-3/4"	2
12	62246	RIVET, POP	4
11	62245	SCREW, SHOULDER	1
10	62244	NUT, HEX	1
9	240030-04	POINTER, ANGLE INDICATOR	1
8	33409	DECAL, ANCHOR POINT	2
7	62249	NUT, NYLOCK, 3/8-16 UNC	2
6	62248	HHCS, 3/8-16 UNC X 3	2
5	61850	WELDMENT, YOKE	1
4	62052	PIN, PLATFORM PIVOT, SHORT	1
3	60472	DIVERSIFIED VINYL DECAL	2
2	62056	PIN, PLATFORM PIVOT, LONG	1
1	62054	ASSEMBLY, BASKET, ONE MAN	1
ITEM NO.	PART NUMBER	DESCRIPTION	QTY

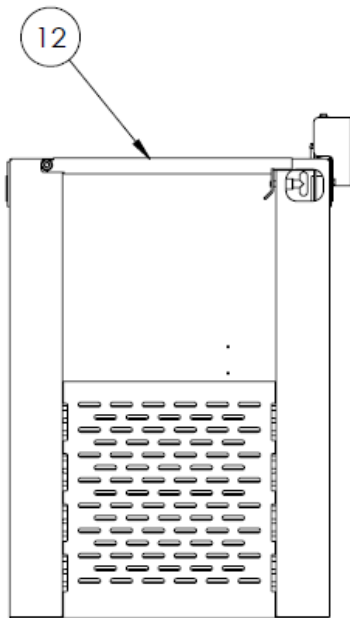
Replacement Parts



DETAIL A



DETAIL B



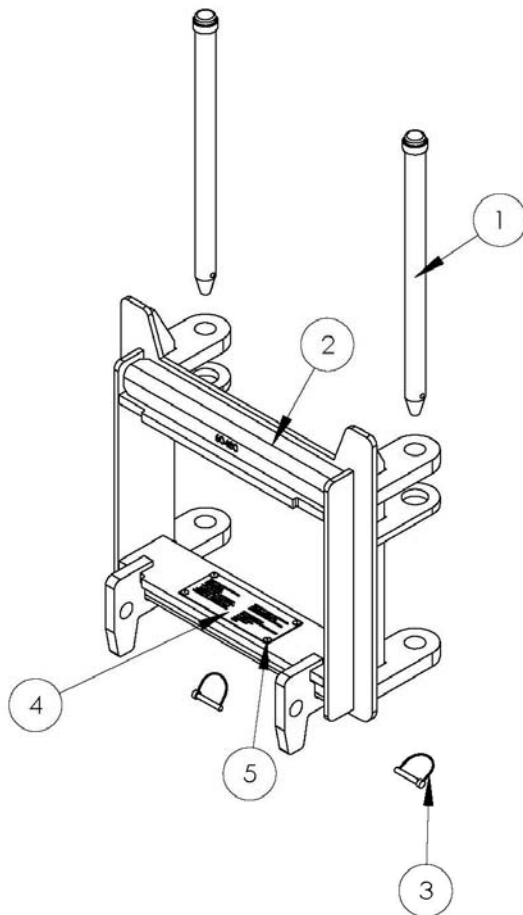
17		COTTER PIN, 5/64" DIA X 1/2" LG	1
16		WASHER, FLAT, 5/16	3
15	62352	PIN, BRAKE CALIPER	1
14	62252	BUSHING, BUNTING	2
13		WASHER, FLAT, 1-2 DIA SAE	2
12	61837	SINGLE MAN BASKET GATE	1
11		NUT, HEX, NYLOCK, 1/2-13 UNC	1
10		HHCS, 1/2-13 UNC X 2 5/8 LG	1
9		NUT, HEX, NYLOCK, 5-16 UNC	1
8		HBOLT 0.3125-18x0.75x0.75-N	1
7		HHCS, 5/16-18 UNC X 1/2 LG	2
6		HHCS, 5/16 X 18 UNC 1 LG	4
5	62401	CLAMP, PULL	1
4	62402	CLEVIS ROD	1
3	62059	BRAKE CALIPER, MECHANICAL	1
2	62055	COVER, BRAKE	1
1	61831	WLDT, BASKET, ONE ARM	1
ITEM NO.	PART NUMBER	DESCRIPTION	QTY.

Quick Change Assembly Replacement Parts

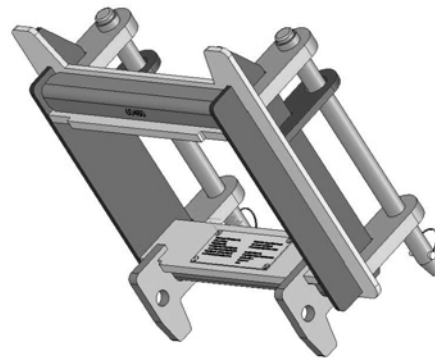
Chart of Quick Change Assemblies and Replacement Parts

ASSEMBLY	WELDMENT	PIN, BOOM ADAPTER MOUNT	LINCH PIN	PLATE, SERIAL NO.	RIVET, DRIVE
MANITEX					
61629	60480	61252	MCM98416A125	61867	MCM97086A505
61631	60510	61252	MCM98416A125	61867	MCM97086A505
61630	60540	61252	MCM98416A125	61867	MCM97086A505
61632	60545	61252	MCM98416A125	61867	MCM97086A505
NATIONAL					
61585	61270	61252	MCM98416A015		
61586	61279	61252	MCM98416A015	61867	MCM97086A505
61587	61274	61252	MCM98416A015		
ALTEC					
61590	61273	61252	MCM98416A125	61867	MCM97086A505
TEREX					
61591	61566	61252	MCM98416A125	61867	MCM97086A505

Example Parts Page for 61629



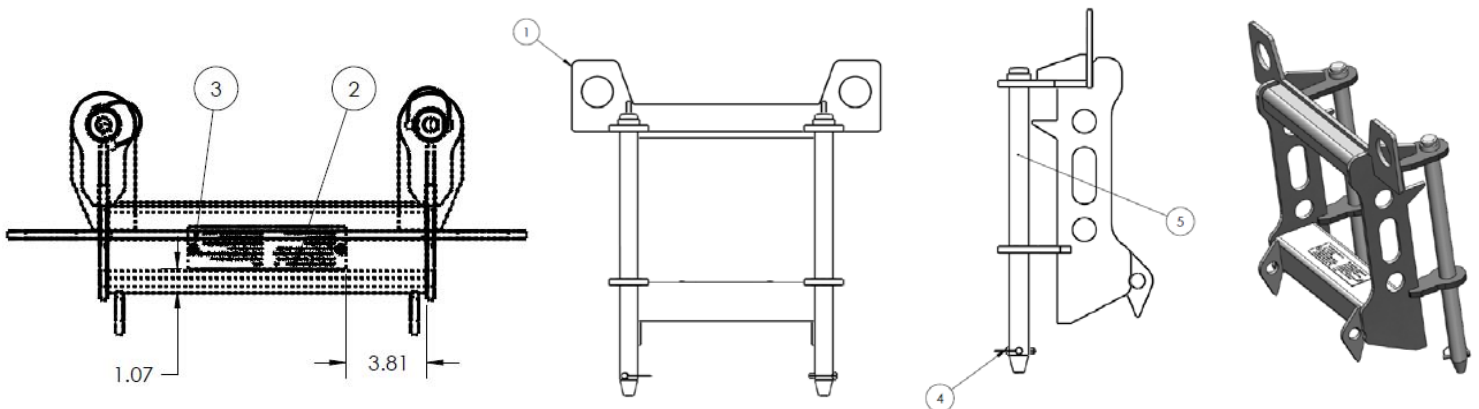
QUICK CHANGE ADAPTER (61629)			
ITEM NO.	PART NUMBER	DESCRIPTION	QTY.
1	61301	PIN, QUICK CHANGE, 1.250 DIA	2
2	60480	Quick Connect Weldment, 17-3/4 Pin	1
3		LINCH PIN 5/16" DIA X 1-3/4", MCM 9841 6A125	2
4	61867	PLATE, ADAPTER SERIAL NUMBER	1
5		RIVET, DRIVE, MCM 97086A505	4



Product Development LLC

Boom Truck Quick Change Assembly Replacement Parts

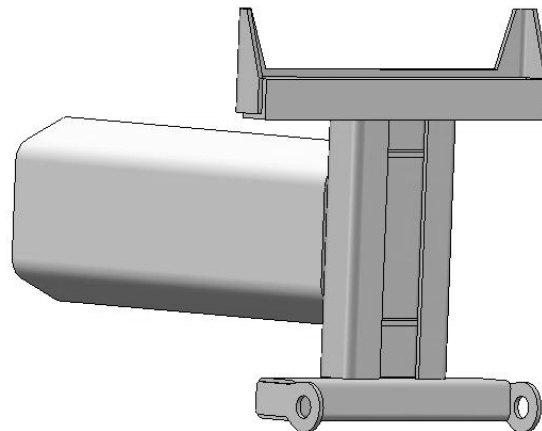
			ITEM 5	ITEM 1	ITEM 2	ITEM 3	ITEM 4	
	CRANE MANUFACTURE	CRANE MODEL #	QUICK CHANGE ADAPTER ASSEMBLY	PIN #	QUICK CHANGE WELDMENT	SERIAL NUMBER PLATE	RIVET	LINCH PIN
QUANTITY	-	-	-	2	1	1	2	2
	NATIONAL	500E	62137-01	61269	61970-01	61979	62314	62241
		671 E2	62137-02	61269	61970-02	61979	62314	62241
		890D	62137-03	61269	61970-03	61979	62314	62241
		13105	62137-03	61269	61970-03	61979	62314	62241
		13110A	62137-03	61269	61970-03	61979	62314	62241
		13110H	62137-03	61269	61970-03	61979	62314	62241
		8100	62137-03	61269	61970-03	61979	62314	62241
		13100A	62137-03	61269	61970-03	61979	62314	62241
		14100	62137-04	61269	61970-04	61979	62314	62241
		14127	62137-04	61269	61970-04	61979	62314	62241
		15103	62137-05	61269	61970-05	61979	62314	62241
		18142	62137-05	61269	61970-05	61979	62314	62241
		9103A	62137-05	61269	61970-05	61979	62314	62241
	ALTEC	18-70	62137-11	61299	61970-11	61979	62314	62241
		26	62137-19	61299	61970-19	61979	62314	62241
		35-103	62137-07	61299	61970-07	61979	62314	62241
		38-103	62137-07	61299	61970-07	61979	62314	62241
		38-127	62137-20	61299	61970-20	61979	62314	62241
	MANITEX	1200	62137-18	61301	61970-18	61979	62314	62241
		1501	62137-18	61301	61970-18	61979	62314	62241
		26101	62137-08	61301	61970-08	61979	62314	62241
		22101	62137-08	61301	61970-08	61979	62314	62241
		30112	62137-08	61301	61970-08	61979	62314	62241
		30102	62137-08	61301	61970-08	61979	62314	62241
		2892	62137-08	61301	61970-08	61979	62314	62241
		30100	62137-09	61299	61970-09	61979	62314	62241
		35100	62137-09	61299	61970-09	61979	62314	62241
		38100S	62137-09	61299	61970-09	61979	62314	62241
		40100S	62137-09	61299	61970-09	61979	62314	62241
		30124	62137-10	61299	61970-10	61979	62314	62241
		35124	62137-10	61299	61970-10	61979	62314	62241
		38124S	62137-10	61299	61970-10	61979	62314	62241
		40124S	62137-10	61299	61970-10	61979	62314	62241
	TEREX	60100	62137-06	61299	61970-06	61979	62314	62241
		4792	62137-06	61299	61970-06	61979	62314	62241
	ELLIOTT	1800	62137-12	61269	61970-12	61979	62314	62241
		32117	62137-13	61269	61970-13	61979	62314	62241
		30T	62137-13	61269	61970-13	61979	62314	62241
		26105	62137-13	61269	61970-13	61979	62314	62241
		24105	62137-13	61269	61970-13	61979	62314	62241
		18125	62137-21	61269	61970-21	61979	62314	62241
	TADANO	1882	62137-14	61301	61970-14	61979	62314	62241
		20110	62137-14	61301	61970-14	61979	62314	62241
		35100	62137-15	62322	61970-15	61979	62314	62327



**Knuckle Boom Quick Change Assembly
Replacement Parts**

CRANE MANUFACTURE	CRANE MODEL #	QUICK CHANGE ADAPTER ASSEMBLY	SERIAL NUMBER PLATE	RIVET
IMT				
	52/380 k8	61935	91979	62314
	910 k3	62196	91979	62314
	13/88 k4	62413	91979	62314
	15200 H2	62685	91979	62314
	10/65	62686	91979	62314
	1498	62687	91979	62314
	5200 H2 1M	62689	91979	62314
	17/117	62559	91979	62314
AMCO VEBA				
	950 6S	62150	91979	62314
HIAB				
	166E-5 Duo	62622	91979	62314

Example Quick Change Part Number 62150



DIVERSIFIED

• P R O D U C T •

DEVELOPMENT

1001 Webster Avenue
Waco, Texas 76706

254-757-1177 phone
254-757-1188 fax

dpd@diversifiedproduct.com

© 2010 Diversified Product Development