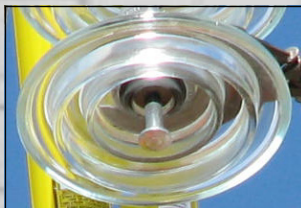


# BUNDLE LIFTER

**BL-2-10-3500**



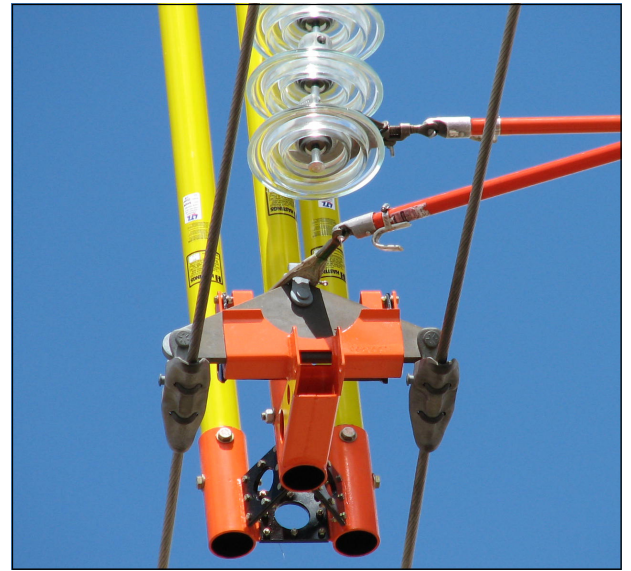
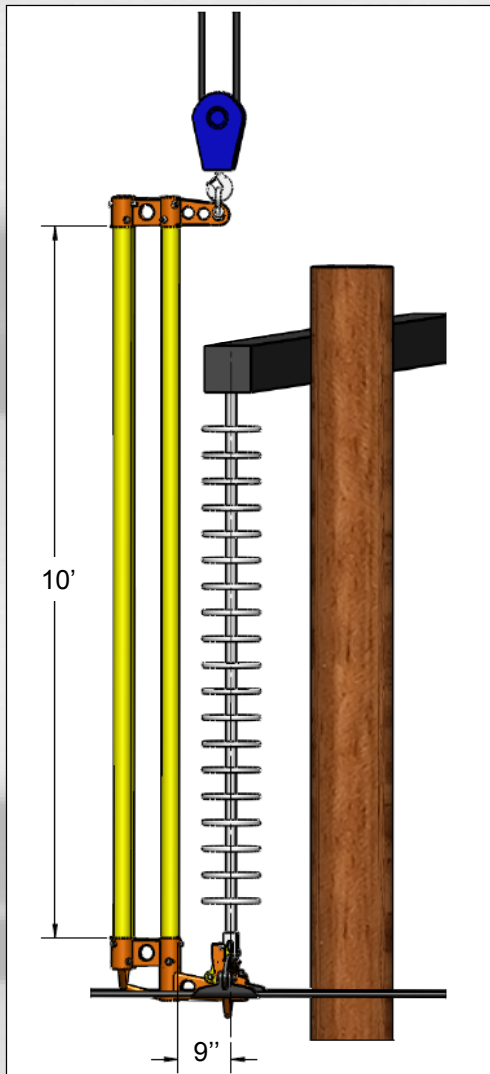
**DIVERSIFIED**

**P R O D U C T S**

(254) 757-1177

[www.diversifiedproduct.com](http://www.diversifiedproduct.com)

*The bundle lifter keeps the yoke plate in a vertical position so the insulator string can be connected easily.*



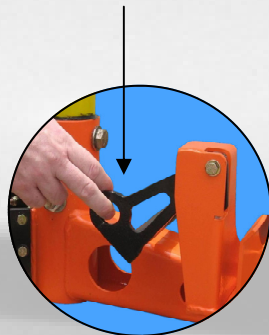
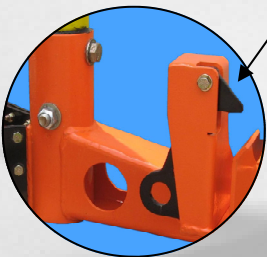
#### FEATURES AND BENEFITS:

- High strength steel reduces overall weight
- Heavy duty construction provides a rugged bundle lifter
- Narrow design aids in picking up the bundle
- Bonded/Bolted fiberglass-to-steel joints for increased strength
- Clear span (10 ft) fiberglass for added dielectric capacity

#### SPECIFICATIONS (BL-2-10-3500):

- Load capacity: 3,500 lb
- Clear span fiberglass: 10 ft
- Dimensions: 14" x 24" x 140"
- Weight: 125 lb

Gate secures the yoke plate



**DIVERSIFIED**

P R O D U C T S

1001 Webster Avenue  
Waco, Texas 76706  
254-757-1177 phone  
noahg@diversifiedproduct.com  
www.diversifiedproduct.com  
© 2010 Diversified Products

*Photos and diagrams are for promotional purposes only.*

*Product design and specifications may change without notice or obligation.*