

## Diversified Projects



*Where innovative concepts and  
brilliant designs unite.*

## Services



**DIVERSIFIED**

• P R O D U C T •

**DEVELOPMENT**

1001 Webster Avenue  
Waco, Texas 76706

Phone: 254-757-1177  
Email: [rfritel@diversifiedproduct.com](mailto:rfritel@diversifiedproduct.com)  
[www.diversifiedproduct.com](http://www.diversifiedproduct.com)

© 2010 Diversified Product Development

Diversified  
Product  
Development

*“When I opened Diversified Product Development 14 years ago, I visualized meeting and exceeding clients’ expectations by creating a unique company that provides fully integrated product design and development.”*

Ray Fritel, President

**Diversified Product Development performs as an extension of your company.**

**Benefits to Outsourcing with Diversified**

- Diverse Product Knowledge
- Rapid Response
- Innovative Solutions
- Market Studies, Competitive Comparisons, Product Profiles
- Concept and Industrial Design, Styling and Ergonomics
- Cost Reduction
- Project Management
- Customer Service Support; Manuals, Field Service Kits
- Prototype/ Testing/ Production
- Fixtures
- Fabrication, Welding, Assembly & Painting
- FMECA/ FMEA



54,000 square foot facility in Waco, Texas

**Core Competencies**

Using our core competencies, we successfully fill a niche in the mobile, construction, utility and rental equipment sector. We apply our experience in mechanisms, structures, hydraulics and control systems to projects of *every* size.

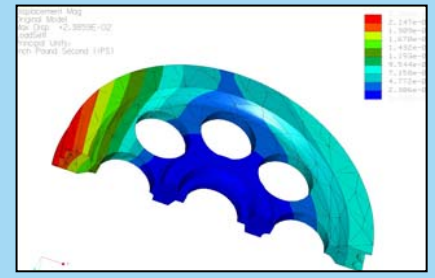
- Mechanical Systems
- Controls (Hydraulic, Electric, PLC)
- Hydraulics (Cylinders, Motors, Linear, Power Transmission)
- Electrical (Control, Power Transmission)
- Power Train (PTO, Mechanical, Hydraulic, Hydrostatic, Pneumatic)
- Prototyping (*All equipment pictured was prototyped at Diversified*)
- Testing



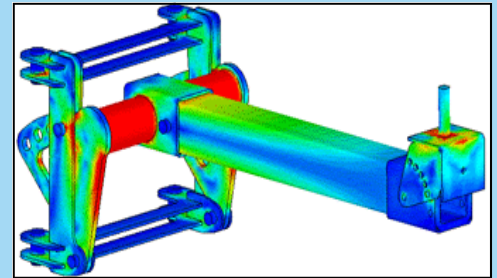
**254-757-1177**

**Analysis and Software**

Full-spectrum proficiency with state-of-the-art software allows us to design, analyze and document your product needs.



- SolidWorks®
- COSMOSWorks™ FEA
- COSMOMotion
- AutoDesk Electric®
- AutoDesk Inventor®
- ProEngineer®
- Pro/MECHANICA™ FEA
- Microsoft® Office and Project



*“Finite element analysis (FEA) is a valuable tool that allows us to confirm our design and calculations. It is especially useful in analyzing areas of stress concentration, which are difficult to analyze with traditional hand calculations.”*

Dale Wyble, Project Engineer